

PEPPER TO MINI PUMPKINS



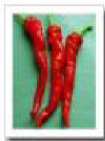
PEPPER ANAHEIM

75 days. Pungent pepper for fresh use, canning, or freezing. HOT! 20 seeds #49 TS



PEPPER California Wonder

74 days. Good bell pepper turning from green to red. Thick fleshed. 15 seeds #25 TS



PEPPER Cayenne Large Thick

75 days. Thick walled peppers reach 5" long and are often dried and ground into powder. HOT! 1 gram #38 TS



PEPPER Jalapeno M

73 days. Uniform peppers turn from green to red when mature. HOT! 1 gram #39 TS



PEPPER Sweet Banana

77 days. Popular home garden variety turning from yellow to red. 20 seeds #19 TS



MINI PUMPKIN Baby Boo

100 days. Miniature white variety great for decorating. 15 seeds #28 IS



MINI PUMPKIN Orange

95 days. A 4" miniature ornamental pumpkin with high yields. 15 Seeds #27 IS



MINI PUMPKIN Pumpkemon

100 days. A small 2 lb. ornamental pumpkin with a white background and orange/green stripes. Semi-Bush Plant. 15 seeds #21 IS

PUMPKIN TO RADISH



PUMPKIN Big Max

95 days. This large variety can, if correctly cared for, weigh up to 200 lbs! *Not a true pumpkin* 5 seeds #42 TS



PUMPKIN Aladdin Iowa Variety (Unt.)

115 days. Large, powdery mildew tolerant pumpkin often reaching 35 lbs. This variety is often used for our annual Pumpkin Days 10 seeds. #26 IS



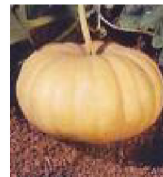
PUMPKIN Aladdin Treated

115 days. Large, powdery mildew tolerant pumpkin often reaching 35 lbs. This variety is often used for our annual Pumpkin Days 10 seeds. #46 TS



PUMPKIN Cotton Candy

A good handled white pumpkin weighing 5 to 12 lbs. 10 seeds #48 TS



PUMPKIN Long Island Cheese

95 days. Squash variety resembling a wheel of cheese. Weighs between 6 and 10 lbs. 10 seeds #43 TS



PUMPKIN Touch of Autumn

95 days. Powdery Mildew Tolerant. This pumpkin has excellent handles and weighs 2 to 3 lbs. Semi Bush Plant. 10 seeds #47 TS



RADISH Crimson Giant

45 days. Good yields of large flavorful radishes. An all around favorite. 6 grams #41



RADISH Early Scarlet Globe

Scarlet red roots with white flesh.

1/4 oz. #30

RHUBARB TO SQUASH



RHUBARB Ruby Red

Standard Rhubarb SEED with thick, tender, red-green stalks. 25 seeds #50 TS



RUTABAGA Laurentian

100 days. 4 to 6 inch roots are sweet, firm, and mild. 1/2 oz. # 51 TS



SPINACH Bloomsdale Long Standing

45 days. Slow to bolt with savoyed, dark green leaves. 2 oz. #52



SQUASH Carnival Acorn

85 days. An acorn squash with a multi-colored rind. Colors are usually green, orange, and yellow. 15 seeds #29 IS



SQUASH Sweet Dumpling

105 days. This winter squash produces high yields of green striped squash that are as sweet as honey. Cook as any other squash. 15 seeds #20 IS



SQUASH Table Ace (Acorn)

80 days. Very flavorful acorn variety with good storage life. Fruit size is 6"X5". 15 seeds #53 TS



SQUASH Ultra (Butternut)

90 days. A high yielding butternut often weighing up to 10 lbs. Fruit size is about 15". 15 seeds. #54 TS



Squash Garden Spineless Zucchini

50 days. Spineless variety has quality fruit and should be harvested at about 6-8". 20 seeds #55 TS

KOHLRABI TO PEA



KOHLRABI Early Purple Vienna

60 days. Reddish-purple variety with a tender white flesh. 1/4 oz. #34



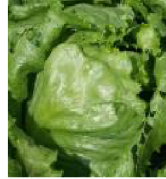
KOHLRABI Early White Vienna

55 days. Similar to purple Vienna with a medium green color. 1/4 oz. #56



LETTUCE Buttercrunch

64 days. One of the easiest lettuce varieties to grow. Vigorous plants produce delicious leaves and tender ribs in the center. 1963 AAS Winner. 1 gram #44



LETTUCE Iceberg

Light green, medium sized solid heads. Good home garden variety. 4 grams #15



PARSNIP Hollow Crown

105 days. 12" roots are well tapered and of high quality. 1/4 oz. #13



PEAS Alaska Extra Early

57 days. This variety is early, hardy, and wilt resistant. Pods are 2 1/2 inches long and set 6 peas per pod. 2 oz. #31 TS



PEA Little Marvel

63 days. A dependable dwarf plant variety averaging 3 1/2 inches long. 2 oz. #57 TS



Wildflower Mix

A mixture of various varieties of wildflower seed. 1/4 oz. #35